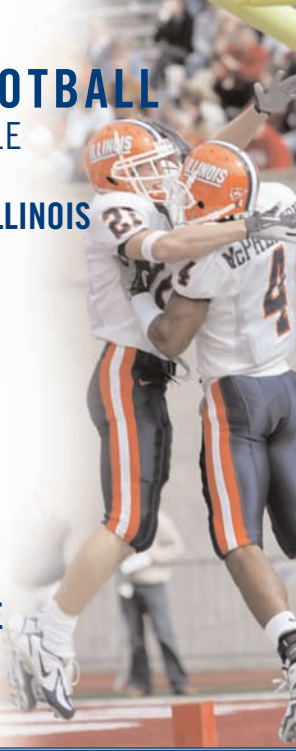



2006 ILLINI FOOTBALL HOME SCHEDULE

- Sept. 2  EASTERN ILLINOIS
- Sept. 16  SYRACUSE
- Sept. 23  IOWA
- Oct. 7  INDIANA
- Oct. 14  OHIO
- Nov. 4  OHIO STATE
- Nov. 11  PURDUE




 Brielfeldt Athletic Building
 1700 South Fourth Street
 Champaign, Illinois 61820



06 FOOTBALL

SEASON TICKETS

ILLINOIS
 IT'S WHERE WE LIVE.
 IT'S WHO WE CHEER.




GET YOUR TICKETS
NOW



SEASON TICKETS

-  Prime* \$269
-  Sidelines** \$249
-  Horseshoe/Corners \$149
-  Students \$91
-  Students - Block I \$116
includes \$25 Illini Pride Membership

SINGLE GAME

	 Sidelines	 Horseshoe	 Students
Sept. 2 Eastern Illinois	\$42	\$24	\$24
Sept. 16 Syracuse	\$42	\$24	\$24
Sept. 23 Iowa	\$50	\$32	\$24
Oct. 7 Indiana	\$42	\$24	\$24
Oct. 14 Ohio	\$42	\$24	\$24
Nov. 4 Ohio State	\$50	\$32	\$24
Nov. 11 Purdue	\$42	\$24	\$24



*Seating in this area requires 1 FUND donation. Call (217) 333-6595.
 **1 FUND membership is not required for sideline seats, but will enhance your seat location.

To order tickets:
 1-866-ILLINI-1 or fightingillini.com

